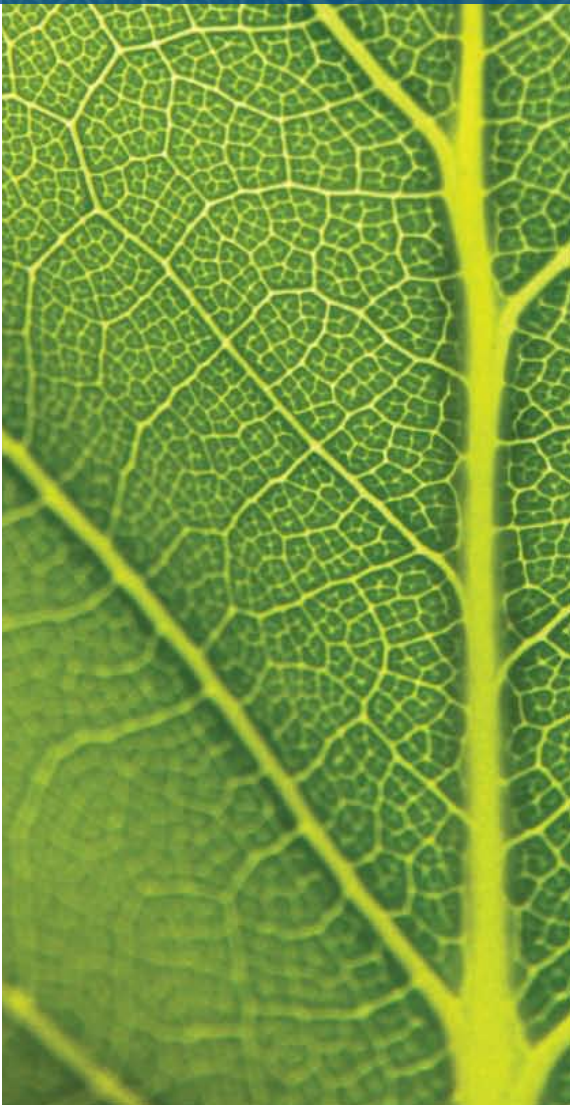


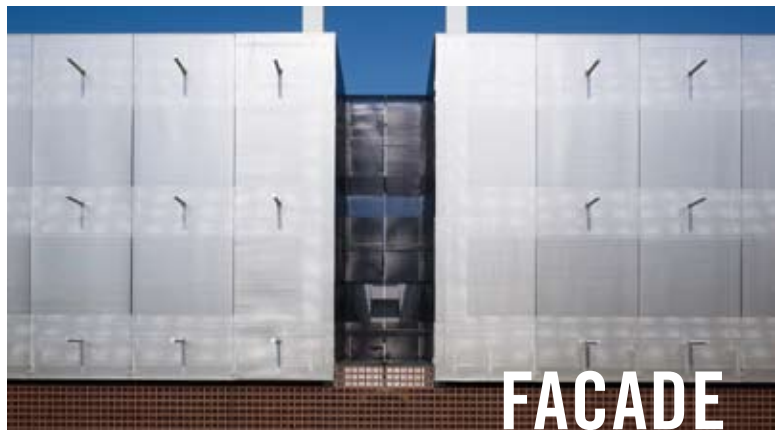


W.S. TYLER LEED® CREDIT STATEMENT
Stainless Steel Architectural Fabric

Weaving design into
your sustainable solutions



OUR STAINLESS STEEL FABRICS WEAVE FUNCTIONALITY WITH HIGHLY AESTHETIC FEATURES -- OPENING NEW PERSPECTIVES TO CREATIVITY WHILE SUPPORTING YOUR SUSTAINABLE BUILDING SOLUTIONS.



FACADE



CEILING



SPACE

Stainless steel's durability, recapture rate and high solar reflectance index create a valuable green building design material. These properties can be applied to a variety of installations including :

- Exterior facades
- Design and flow of interior and exterior spaces
- Wall and window treatments
- Ceiling applications
- Lighting control and diffusion

At W.S. Tyler, our designs transform environments outside and in, while the fabric's recycled content and potential energy efficiency, indoor environmental quality and lighting control features can be integrated into your LEED® and green building strategies.

Beyond specific rating system credits, our products can support your sustainable strategies in many ways from re-imagining the exterior of an existing building while minimizing façade renovation to shaping views and lighting for occupant satisfaction.


LEED® CREDIT STATEMENT

At W.S. Tyler, we understand the LEED® process complexities you are trying to navigate: you need clear and genuine documentation, and you need advisors to help you optimize your efforts. The following represents credit opportunity areas for our products within your project. In each instance, we will work closely with you to determine if customized batching or specialized documentation is required to meet your certification objectives.

Sustainability Impact Area & LEED Credits	Descriptive
RECYCLED CONTENT (MR credit 4)	The recycled properties of our stainless steel melts can support your recycled content goals. We are able to deliver specific runs and produce documentation to integrate recycled steel content in your project.
ENERGY EFFICIENCY & LIGHTING (EA prerequisite 2, credit 1, IEQ credit 8.1)	The properties of our products can reduce energy loads inside and outside your building project. When applied to interiors, architectural fabrics transmit beneficial light throughout interior spaces and increasing daylight effectiveness. With exterior applications, solar energy is reflected, reducing cooling loads. Your LEED® design team can benefit from incorporating our product light reflectance and solar reflectance qualities into their energy models.
LIGHT POLLUTION REDUCTION (SS credit 8)	Our stainless steel weaves can decrease the amount of light pollution emitted from garages and exterior staircases helping to stop unwanted light escaping buildings at night.
SOLID WASTE MANAGEMENT (MR credit 2)	100% of our product and packaging can be recycled either on the job site or by returning it to us.

Regional Materials: Dependent on the product specified, the recycled steel content of our products is sourced and manufactured in either the Midwest United States or Europe.





W.S. TYLER BEGAN WEAVING WIRE CLOTH IN CLEVELAND IN 1872. TODAY, W. S. TYLER AND ITS GERMANY-BASED PARENT COMPANY, HAVER & BOECKER ARE WORLDWIDE LEADERS IN WIRE-WEAVING WITH A GLOBAL NETWORK OF CUSTOMER SERVICE, DISTRIBUTION AND MANUFACTURING FACILITIES.

This weaving of tradition and innovation allows us to deliver solutions that exceed the high expectations of our customers. Through collaboration, communication and data, client partnership with W.S. Tyler provides maximum transparency, flexibility, quality and beauty within every design vision.

ENGAGING OUR CUSTOMERS, OUR WORK IS BASED ON OUR EXPERIENCE, RESEARCH AND DEVELOPMENT, ADVANCED MANUFACTURING PROCESSES AND STAFF EXPERTISE. WE UNDERSTAND THE IMPORTANCE OF SUSTAINABILITY WITHIN THE BUILDING INDUSTRY, AND WE ARE COMMITTED TO PROVIDING IN-DEPTH SUPPORT OF YOUR GREEN BUILDING INITIATIVES.



**W.S.TYLER
Industrial Group**

8570 Tyler Boulevard
Mentor, OH 44060
phone 800.321.6188
archsales@wstyler.com

weavingideas.net

