

NEW!

TY-FLEX

***W.S. Tyler's High-Performance, Self-Cleaning Screening System!
Increase Production Significantly!***

QUALITY...

W.S. Tyler's long-time commitment to product quality. Our unique Polyurethane formulas allow us to match the product to the application! Panels are available in the following openings; 1/8", 3/16", 5/32", 1/4", 3/8" and 3/8" x 1" slots.

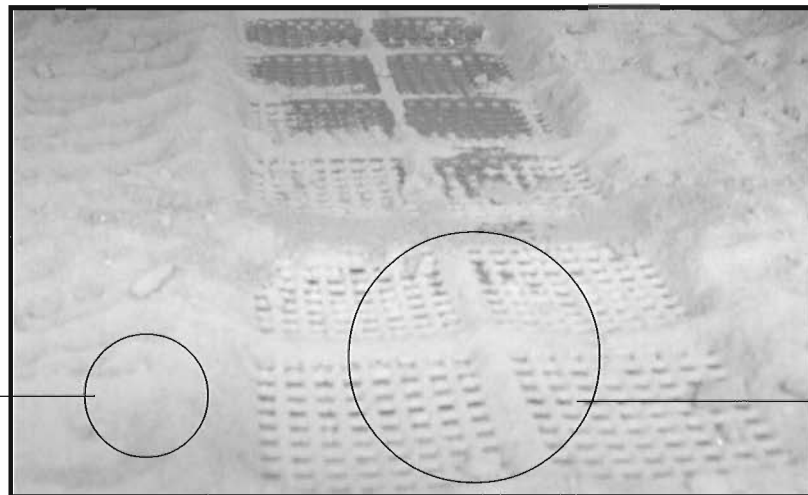
SERVICE...

Knowledgeable sales/service staff available for application assistance. Immediate pricing and on-time deliveries!

VALUE...

Competitive pricing. Cost-effective designs increase screening capacity and provide significant reduction in blinding, especially in tough applications! Pro-rated warranty available on all Ty-Flex screens!

Competitor's Screens



W.S. Tyler's
Ty-Flex Screens

W.S. Tyler's Ty-Flex Screens Shown Above in Screen-to-Screen Comparison!
Results prove the Tyler screen to be less blinding-- greatly increasing screening capacity.

Other Tyrethane Products and Accessories

Screen System

Ty-Max

- Tensionable Polyurethane Screen Panels
- Increased open areas
- Includes Polyurethane Bar Rail Liner

Ty-Deck

- 1' x 4' panels have up to 10% increased open area over traditional modular designs

Ty-Groove

- Direct Replacement for WS 85 Modular Screens by Tema Isenmann, Inc.

Ty-Snap

- Direct Replacement for Dur-X-Snapdeck® Modular Screens by Durex

Accessories

- Ceramathane™, Ceramic/Polyurethane Wear Liners
- Classifier Shoes
- Cross Tube Liners
- Bar Rail Liners
- Spray Nozzles and Deflectors
- Covered Tension Rails

In the U.S.:

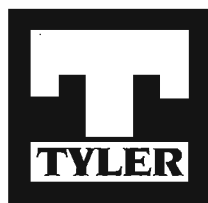
W.S. Tyler
Polyurethane Screen Systems
8570 Tyler Boulevard
Mentor, Ohio U.S.A 44060

Telephone: 800-321-6188
Local: 440-974-1047
Fax: 440-974-0921
E-Mail: wstyler@wstyler.com
Website: www.wstyler.com

In Canada:

W.S. Tyler Canada
Screening and Machinery Products
P.O. Box 3006, 225 Ontario Street
St. Catharines, Ontario Canada L2R 7B6

Telephone: 800-325-5993
Local: 905-688-2644
Fax: 905-688-4733
E-Mail: wstyler@wstyler.on.ca
Website: www.wstyler.com



W.S. TYLER